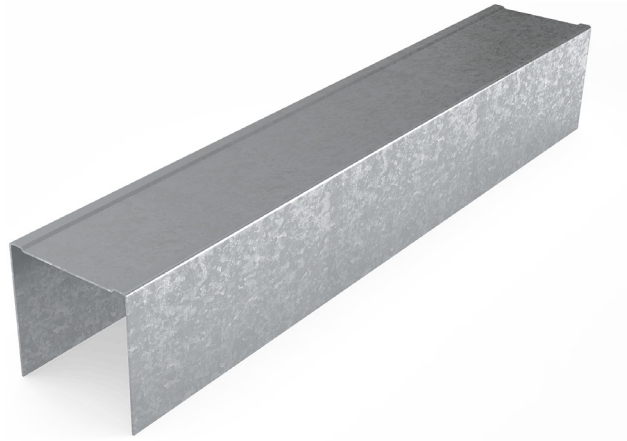


MADA (DHT) DEFLECTION HEAD TRACK

Technical Data Sheet

TDS-MM-R01-Rev1 DEFLECTION HEAD TRACK - May 2022



Product Description

Mada DHT (Deflection Head Track) supports the wall or soffit studs, allowing for the vertical deflection of floor beams and floor decks above. Our DHT track features a knurled surface for superior strength, increased stiffness, and less screw slippage.

Field of Application

Our Deflection Head Track (DHT) can be used for:

- Non-load bearing partition systems
- Liner systems
- Metal stud ceiling systems
- And other non-load bearing assemblies



CERTIFIED
CLEAN AIR GOLD



Tested and Certified to meet and exceed ASTM E119 for Fire Rated Systems

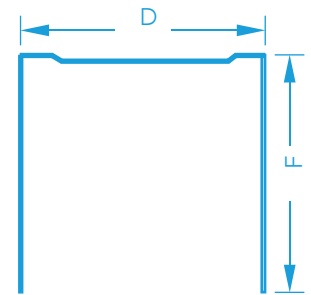
TECHNICAL DATA SHEET

Manufacturing Standards

- All Mada Metal Profiles are manufactured to meet or exceed ASTM C645 and ASTM C955.
- Galvanized Steel Coils meet or exceed ASTM A653.
- For recommended storage and installation, please refer to ASTM C754 and ASTM C1007.

Product Characteristics

Description	Technicals Parameters
Coating	Z120, Z180 & Z275
Yield Strength	240MPa - 310MPa
Tensile Strength	340MPa - 420MPa
Material	Galvanized Steel
Flanges (mm) (F)	50/50
Length	3000 mm
Thickness (mm), [TCT]	0.50, 0.55, 0.60, 0.70, 0.80, 0.90, 1.00, 1.20 & 1.50.
Sizes (mm), [Depth] (D)	42, 50, 60, 62, 70, 75, 90, 92, 100, 125, 150 & 200



Recommendations

- Use Mada Anchors to fix Mada Wall Track on the substrate.
- Use Mada Wafer Head Screw for metal-to-metal connection.
- Use Mada Wall Stud (C-Stud) for most partition installation.
- Contact technical@madagypsum.com for additional information.

Material Storage and Handling

- Metal products are available in both pack and sub-pack quantities and should be handled in accordance with the recommendations contained in Local Health and Safety at Work Principles and Practices.
- Use only properly trained and licensed operators when for mechanical lifting or movement.
- Store metal products away from airborne contaminants such as acid or salt spray in an environmentally friendly area.
- Always wash hands for personal hygiene and before eating/drinking. Those with sensitive skin conditions should seek medical advice before prolonged handling of metal products.
- When cutting metal profiles, always wear non-fogging goggles for maximum eye protection.
- Consult the Mada System Guide for additional information about related systems and installations.
- Refer to Mada Safety Data Sheet for additional guidance with health and safety, storage, and handling.

Cold-Formed Steel Design References

- North American Specification for the Design of Cold-Formed Steel Structural Members (AISI S100 and AISI S200).
- Analysis and Design of Cold Formed Members per the LRFD and ASD Methods.

General Notes

- This product should not be used for purposes other than those shown on the Mada Technical Proposal.
- This product is a component of the Mada Plus System. Our System Performance Warranty applies to only framing systems made up entirely of Mada Plus System components.
- As products are improved, Mada Gypsum Company may amend this information as needed, without prior notice. Please refer to www.madagypsum.com for the latest information.